

HumaStar 200

Primed for precision, built for performance

- › Reliable and cost-effective - the perfect choice for aspiring labs
- › Intuitive and powerful, designed for easy and efficient operation
- › Enhanced performance to simplify your daily routine



HumaStar 200

human

Human

Diagnostics Worldwide

HumaStar 200

The perfect choice for aspiring labs



- > Advanced cuvette wash station for improved performance and lower failure rate
- > Upgraded pipetting unit delivers higher precision for low volumes and improved repeatability
- > V-shaped low-volume reaction cuvettes reduce operating costs — up to 50% lower price per test
- > Integrated 2D barcode scanner enables effortless import of QC and calibration target values
- > New software streamlines workflows for seamless operation

HumaStar 200 REF 16895

Medium throughput random access analyzer

- > Up to 200 tests per hour
- > Random-access and STAT
- > 80 advanced low volume reaction cuvettes
- > Multi-step cuvette wash station with method defined programmes
- > 60 sample positions for primary tubes and sample cups with internal sample barcode reader
- > 30 reagent positions for 20 ml and 50 ml bottles
- > Capacitive liquid level detector
- > Needle shock detector
- > Liquid containers with level monitoring
- > Efficient data management with LIS via ethernet, ASTM protocol, bidirectional
- > Printing on Windows compatible printer
- > Uninterruptible Power Supply (UPS) 230V included
- > Multi-language software: English, French, Spanish

Designed for easy and efficient operation

- > Continuous reagent cooling independent from main power switch
- > Automated pre and post-dilution processes enhance efficiency for extended walk-away time
- > Convenient reagent management with removable reagent tray and the choice of 50 ml or 20 ml bottles
- > Versatile sample handling with the choice of three different removable sample trays
- > Up to 8 calibrators per method with automatic pre-dilution
- > Minimal water and energy consumption

QC options

- > Levey-Jennings plots and Westgard multi rules
- > Up to 3 QC levels per test
- > Real-time QC monitoring with detailed reporting
- > Method statistics: including test counter, CV%, mean, graphical trend analysis

Powerful and easy to use software

- > Software designed for touchscreen operation with smart graphical user interface
- > Programmable automatic start up routine and multiple work lists
- > Method and reagent monitor (volumes, available tests, calibration, QC status)
- > Continuous loading of samples and reagents
- > Free choice of execution order
- > Results archive with cumulative charts

Safety first with smart system monitoring

- > Intelligent flagging system and extensive error log
- > Lifecycle counter for components with maintenance alerts ensuring consistent performance
- > Two types of systemic and special washing solution
- > Routine checks and individual cuvette blanking
- > Programmable validity limits for methods and reactions
- > Reagent integrity check

HumaConnect – cloud powered services*

- With encrypted automated backups, remote diagnostics, and continuous system monitoring, your analyzers stay up and running at all times.
- > Protect your data with encrypted, automated cloud backups
 - > Reduce analyzer downtime and improve productivity
 - > Speed up the service support through remote troubleshooting



Broad assay panel “Made in Germany”

- > Optimized for the use with HUMAN analyzers
- > Meets various throughput needs with multiple kit sizes
- > Consistent quality “Made in Germany” produced in accordance with the latest quality standards

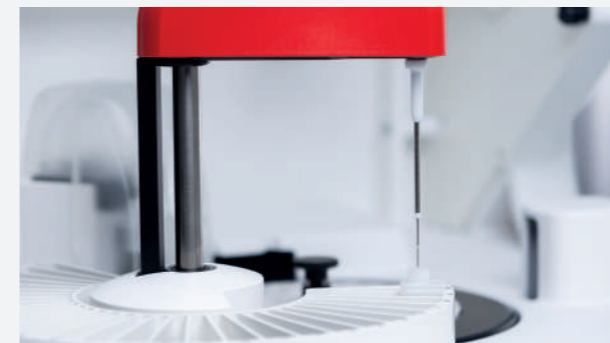
* This optional service is not part of the standard package. Your distributor will be happy to provide you with more details.



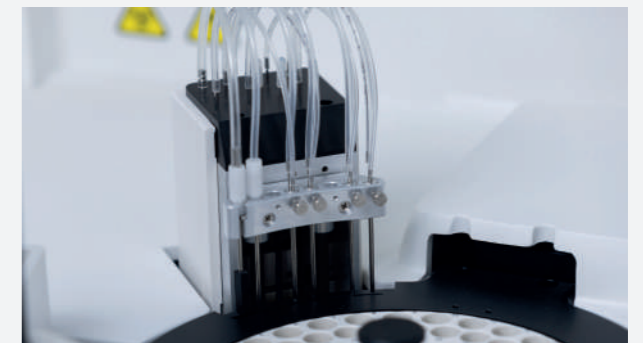
Powerful and easy to use software



V-shaped low-volume reaction cuvettes



Upgraded pipetting unit



Advanced wash station

HumaStar 200

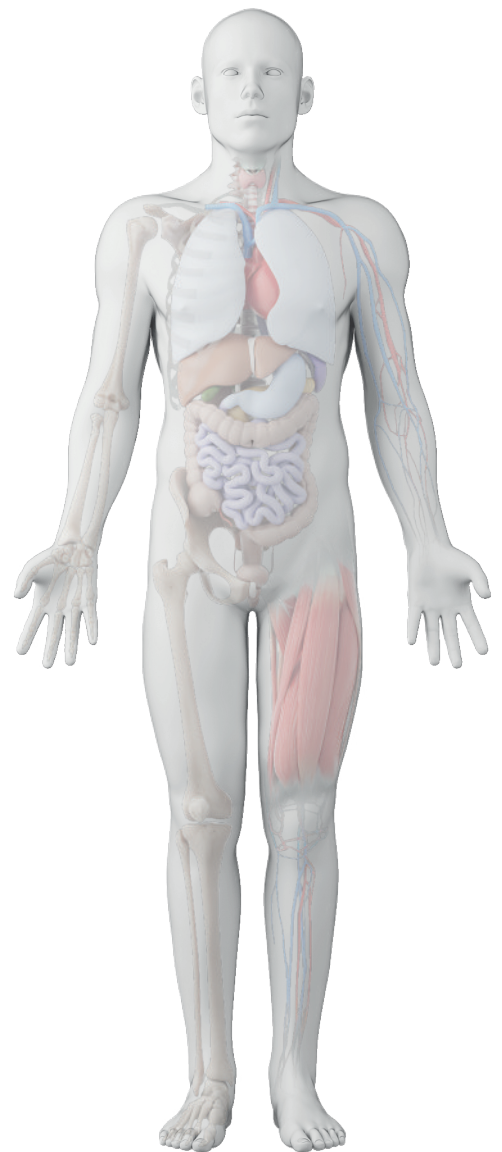
Broad Assay Panel - Made in Germany

Multipurpose reagents

- > Ready-to-use and liquid stable
- > Meets various throughput needs with multiple kit sizes
- > Validated applications and settings for HUMAN analyzers



Immune Status	anti-Streptolysin-O, Complement C3 and C4, CRP, Immunoglobulins IgA, IgG, IgM
Arteriosclerosis	Cholesterol, HDL-/LDL-Cholesterol,
Cardiac Risk Assessment	Triglycerides
Cardiac Panel	CK-NAC, CK-MB, GOT (ASAT), GPT (ALAT), Homocysteine, LDH
Liver Panel	Albumin, Alkaline Phosphatase, Bilirubin Total and Direct, Cholinesterase, gamma-GT, GOT (ASAT), GPT (ALAT), Total Protein
Kidney Panel	Calcium, Creatinine, Cystatin-C, Inorganic Phosphorus, Magnesium, Microalbumin, Potassium, Sodium, Urea/BUN, Uric Acid, Urinary Total Protein
Pancreatic Tests	alpha-Amylase, Lipase, Pancreatic Amylase
Diabetes	Glucose, HbA1c, Microalbumin, Triglycerides, Urinary Total Protein
Bone Metabolism	Alkaline Phosphatase, Calcium, Inorganic Phosphorus, Magnesium
Rheumatic Diseases	anti-Streptolysin-O, Complement C3 and C4, CRP, Rheumatoid Factors
Anemia	Iron, Total Iron Binding Capacity, Transferrin
Water & Electrolyte Balance	Albumin, Chloride, Potassium, Sodium, Total Protein



Human

Diagnostics Worldwide



HUMAN Gesellschaft für Biochemica und Diagnostica mbH
Max-Planck-Ring 21 · 65205 Wiesbaden · Germany
Tel. +49 6122-9988-0 · Fax +49 6122-9988-100 · e-mail: human@human.de · www.human.de